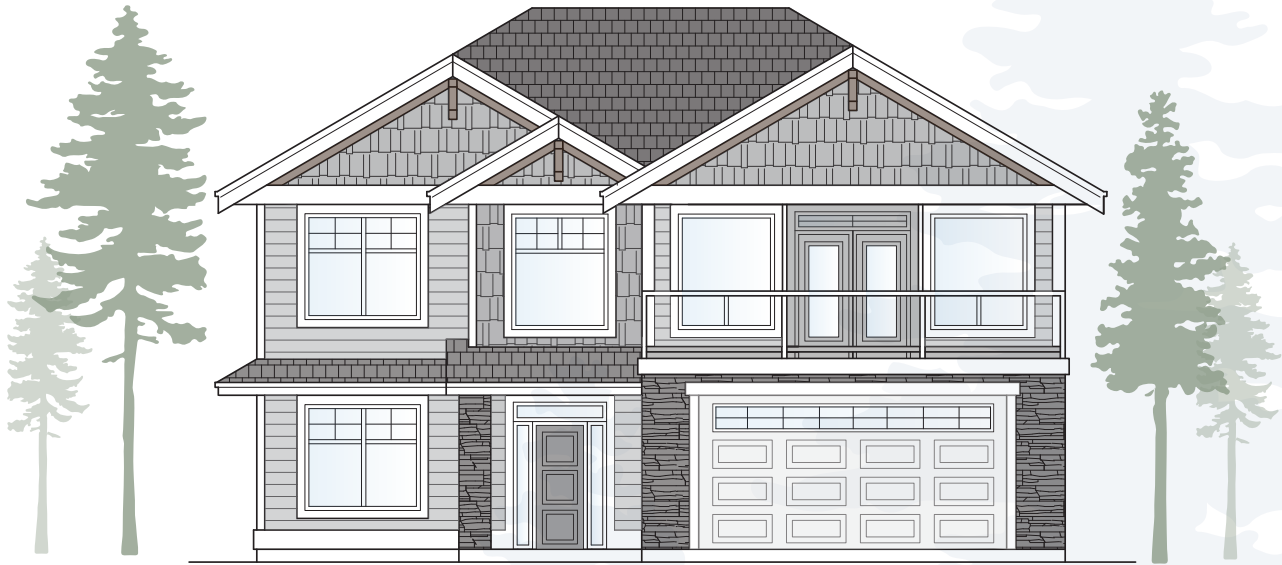


# 1315 Crown Isle Boulevard



## Lot 3

## The Rise Phase IV

Enjoy a high standard of living nestled in the heart of this blossoming development.

Whether you are an empty nester or a growing family, the community at Crown Isle is your ultimate home base.

Easy access to recreational activities, shopping, restaurants, aquatic center, airport, hospital, clinics, schools and much more!

### 2502 Square Feet

### 4 Bedrooms 3 Bathrooms

Pricing and reservations subject to change.

Last updated April 5, 2021

  
**Crown Isle**  
REAL ESTATE

250-703-5054

[CrownIsle.com](http://CrownIsle.com)

# 1315 Crown Isle Boulevard

## EXTERIOR

- Hardi Plank siding
- Concrete til roof
- Starline rain-shield windows & screens
- Stone and timber accents
- Private covered patios with natural gas BBQ outlet

## INTERIOR

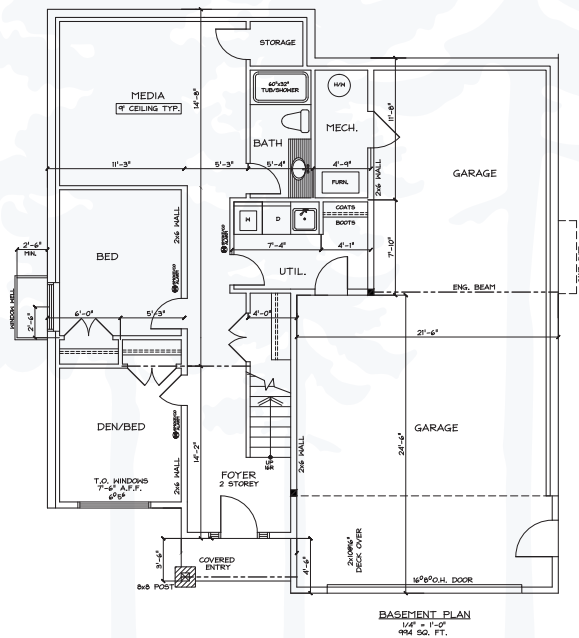
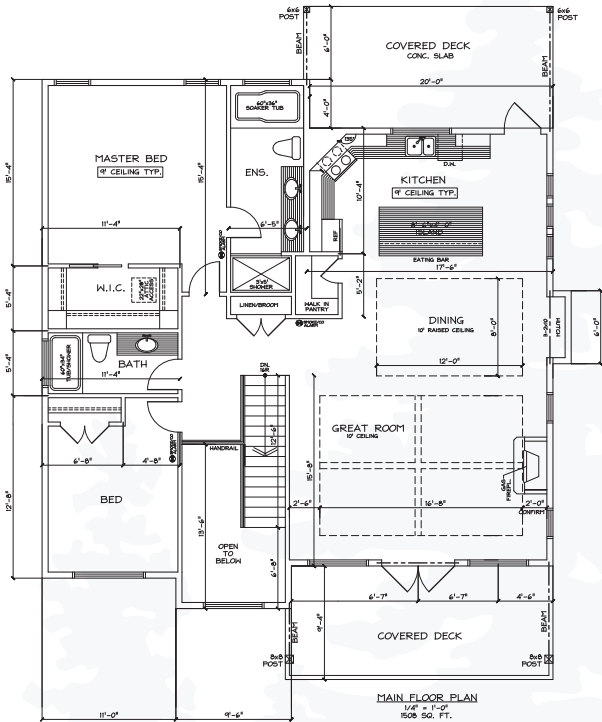
- Open Concept Living Spaces
- European White Oak floors throughout main areas
- Custom Crown Isle moulding, baseboard & trim package
- On-demand hot water system
- Washer & Dryer included
- Gas fireplace
- Quartz counter tops throughout
- Grand entrance with 18' ceiling
- Two covered decks

## KITCHEN

- Stainless Steel Appliances included
- Walk-in Pantry
- Custom tiled backsplash
- Island with lunch seating

## ENSUITE

- Under-mount sinks
- Barrier-free tiled shower with glass door
- Shower Niche
- Free Standing bath
- Tile floor with radiant heating



Jason Andrew  
Director of Real Estate  
Call: 250-207-0070  
jandrew@crownsisle.com



Jayson Welsh  
VP of Construction  
Call: 250-703-0418  
jwelsh@crownsisle.com

*Nobody knows Crown Isle like we do!*