

# 1547 Crown Isle Blvd

## INTERIOR

- Open concept living spaces
- Custom Crown Isle moulding, baseboards and trim package
- Gas fireplace with built in lower cabinets on each side with touch latch doors
- Combination of recessed lighting and light fixtures
- Master bedroom has large walk-in closet and 5 piece ensuite bath
- Contemporary wide plank European white oak flooring throughout

## KITCHEN

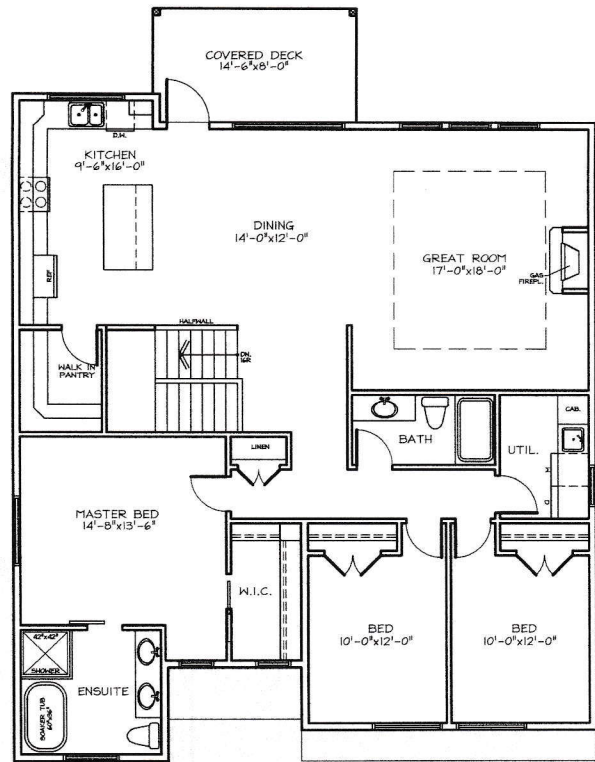
- Stainless steel appliances with gas range
- Large window overlooking back yard and green space
- White cabinetry with soft close drawers and light grey quartz countertops
- Contrasting island with dark wood base and white quartz countertop
- Walk in butler's pantry with wall cupboards, countertop and soft close drawers below

## ENSUITE

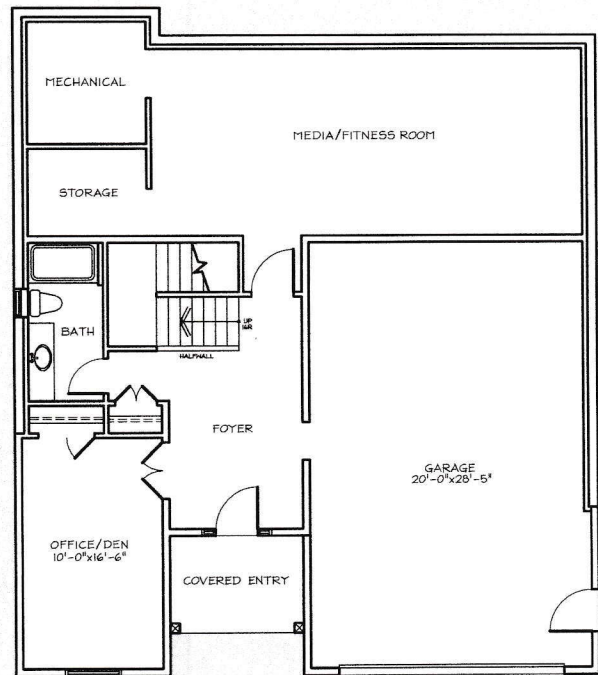
- Double under mount sinks on floating vanity with quartz countertops
- Shower will rain head and glass doors
- Separate luxurious free-standing tub
- Heated tile floor

## EXTERIOR

- Hardi plank siding with Hardi shingles in gables
- Covered entryway
- Custom landscaping complete with inground irrigation
- Rear covered back patio
- Natural gas BBQ hookup on rear patio



**MAIN FLOOR PLAN**  
1740 SQ. FT.  
2937 SQ. FT. TOTAL  
(INCLUDES UNFINISHED AREA)



**BASEMENT PLAN**  
1197 SQ. FT. TOTAL