



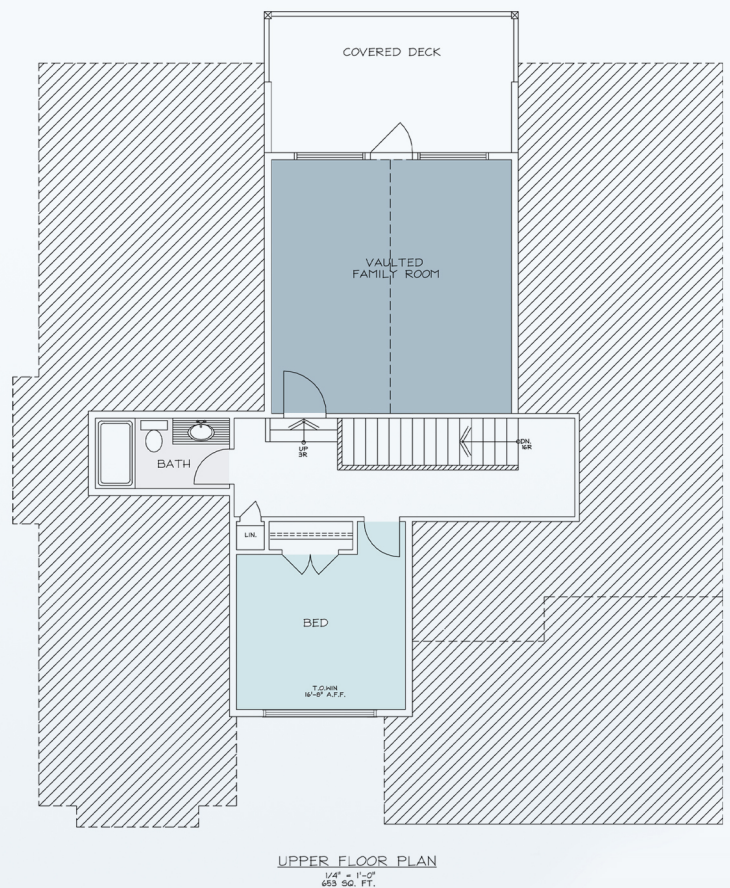
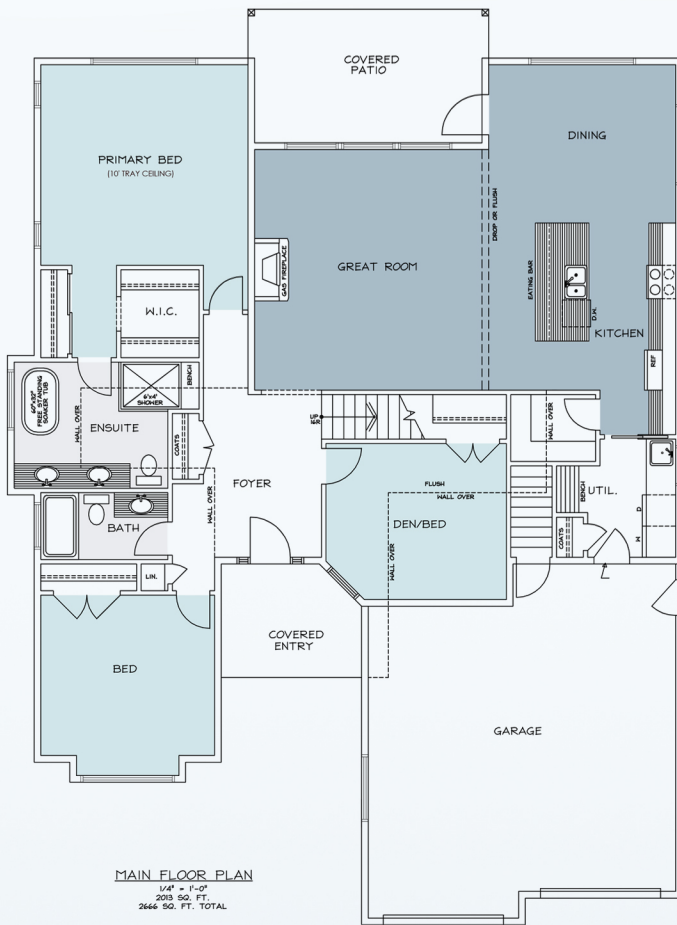
QUALITY HOMES, BUILT ON TRUST.



## 3235 WINCHESTER

**Welcome to Greystone Estates in Crown Isle,  
the residential golf community in the heart of the Comox Valley.**

Stunning 1 1/2 story built by Integra Homes. This 2666 sq ft Home, situated on Golf Course in the popular Crown Isle development, combines the perfect layout with all the right finishings. Engineered hardwood, quartz counters, custom soft-close cabinetry, chef's delight kitchen with walk-in pantry, 11' ceilings in Great Room, 10' tray ceilings in the Primary bedroom, heat pump & hot water on demand, brand new high-end appliances. Your Private Primary Bedroom comes equipped with a good-sized walk-in closet and beautiful spa-like 5-piece ensuite. Their continued commitment to quality construction built on a relationship of trust has made Integra one of Crown Isle's premiere builders.



This plan is published by Integra Homes.  
 Dimensions are approximate and subject to change  
 without notice. All rights reserved, including the rights  
 of reproduction in whole or in part, in any form, without  
 written permission of Integra Homes.

c: 250.331.1877  
 o: 250.338.6318  
 bill@integrahomescv.ca  
 www.integrahomescv.ca